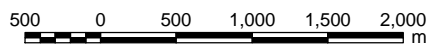


**Notes:**

Blue arrows indicate direction of water flow under normal conditions. Imagery courtesy of Niagara Region. Hydrology courtesy of Niagara Peninsula Conservation Authority. Topographic data used under license with the Ontario Ministry of Natural Resources.

Copyright © 2013 by Stantec Consulting Ltd.

Projection: UTM Zone 17N, NAD 1983



**Project**

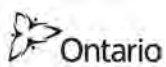
**Niagara Peninsula  
Source Protection Area  
Assessment Report**

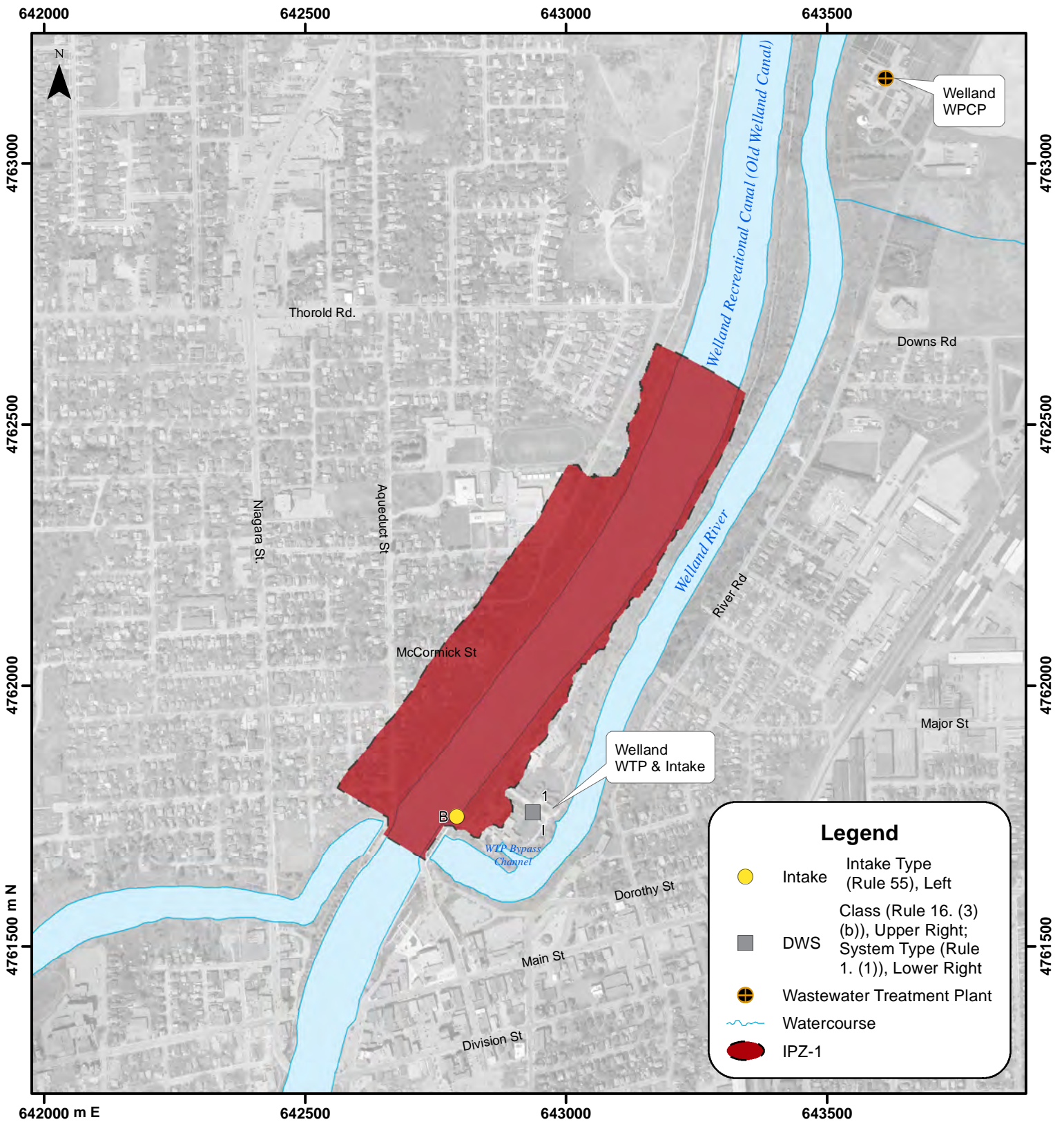
Figure No. Revision No. Date

**6.1 3 July 2013**

**Title**

**Local Setting**





**Legend**

- Intake Intake Type (Rule 55), Left
- DWS Class (Rule 16. (3) (b)), Upper Right; System Type (Rule 1. (1)), Lower Right
- ⊕ Wastewater Treatment Plant
- ~ Watercourse
- IPZ-1

**Notes:**  
 Imagery courtesy of Niagara Region.  
 Hydrology courtesy of Niagara Peninsula Conservation Authority.  
 Copyright © 2013 by Stantec Consulting Ltd.  
**Projection:** UTM Zone 17N, NAD 1983

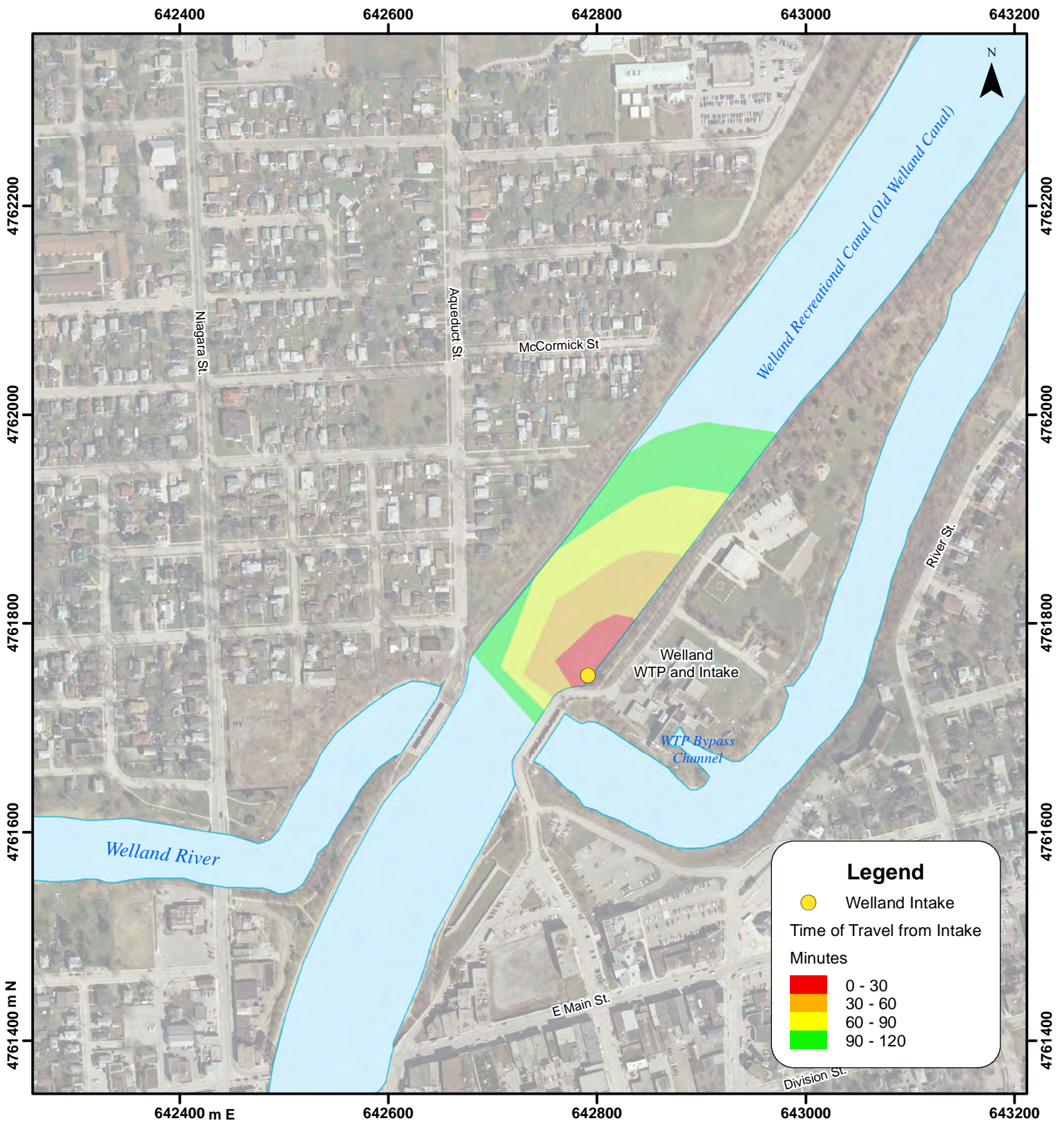


Project  
**Niagara Peninsula  
 Source Protection Area  
 Assessment Report**

Figure No. Revision No. Date  
**6.2 8 June 2013**

Title  
**Welland WTP  
 IPZ-1 Delineation**





**Legend**

- Welland Intake

Time of Travel from Intake  
Minutes

	0 - 30
	30 - 60
	60 - 90
	90 - 120



**Notes:**

Time of Travel from Technical Memorandum NW-6, McCorquodale, 2008. Imagery courtesy of Niagara Region. Water data courtesy of Niagara Region Conservation Authority. Copyright © 2013 Stantec Consulting Ltd. **Projection:** UTM Zone 17N, NAD 1983



**Project**

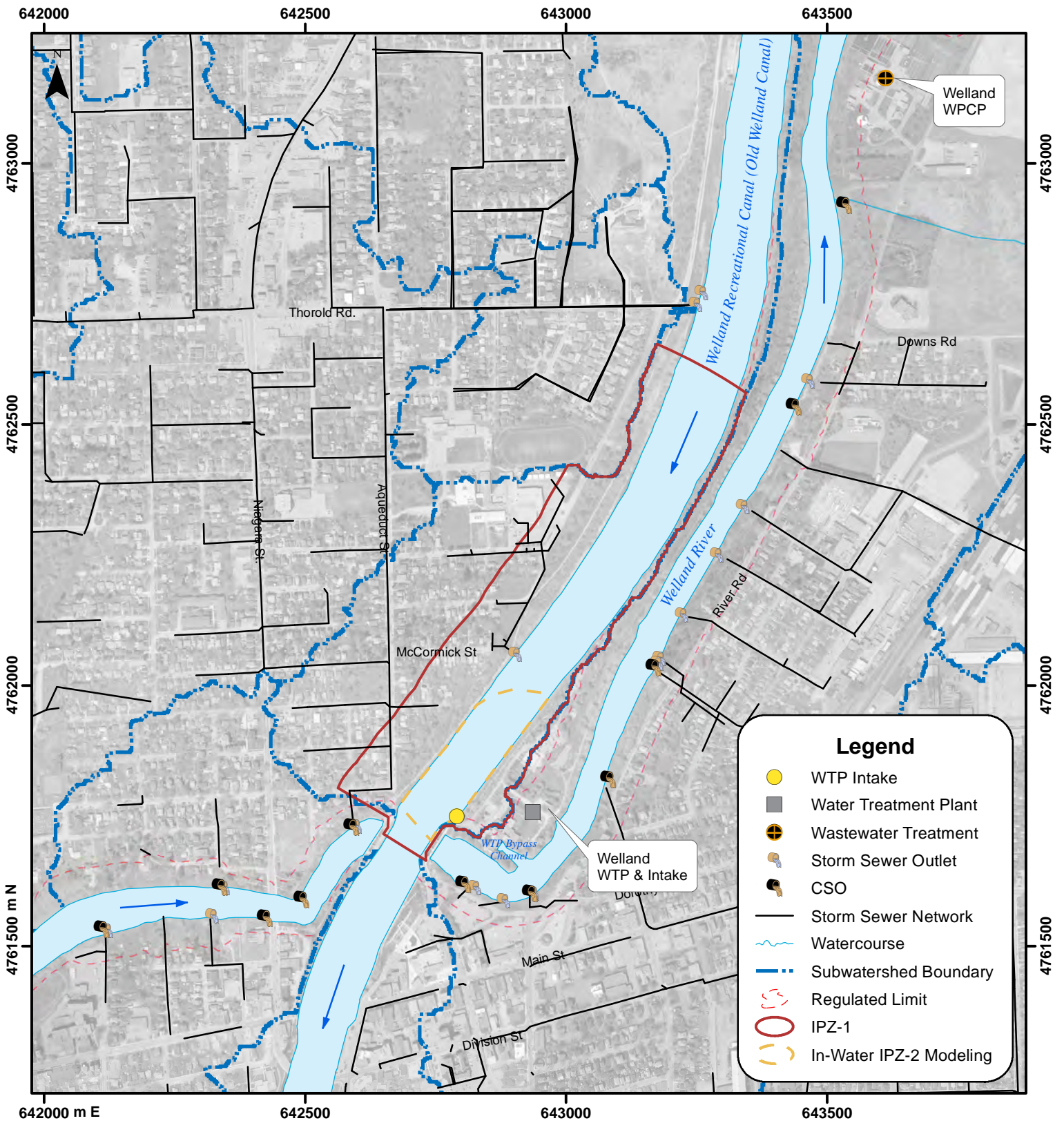
**Niagara Peninsula Source Protection Area Assessment Report**

Figure No.	Revision No.	Date
<b>6.3</b>	<b>3</b>	<b>July 2013</b>

**Title**

**Welland WTP In-Water Modeling Under Normal Conditions**





**Notes:**

Blue arrows indicate direction of flow.  
 Imagery courtesy of Niagara Region.  
 Storm sewer network courtesy of City of Welland.  
 Hydrology courtesy of Niagara Peninsula Conservation Authority.  
 Copyright © 2013 Stantec Consulting Ltd.  
**Projection:** UTM Zone 17N, NAD 1983



**Project**

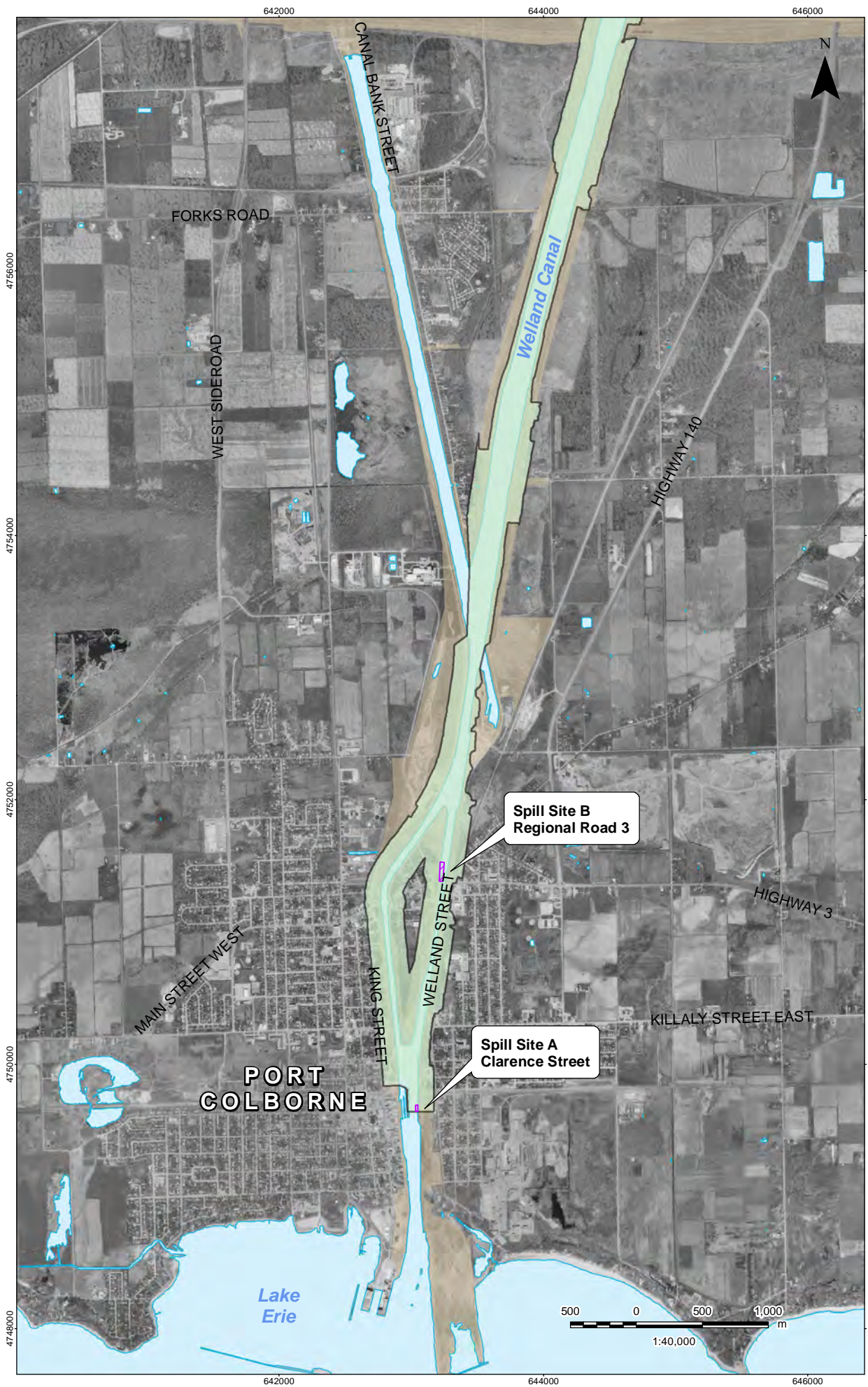
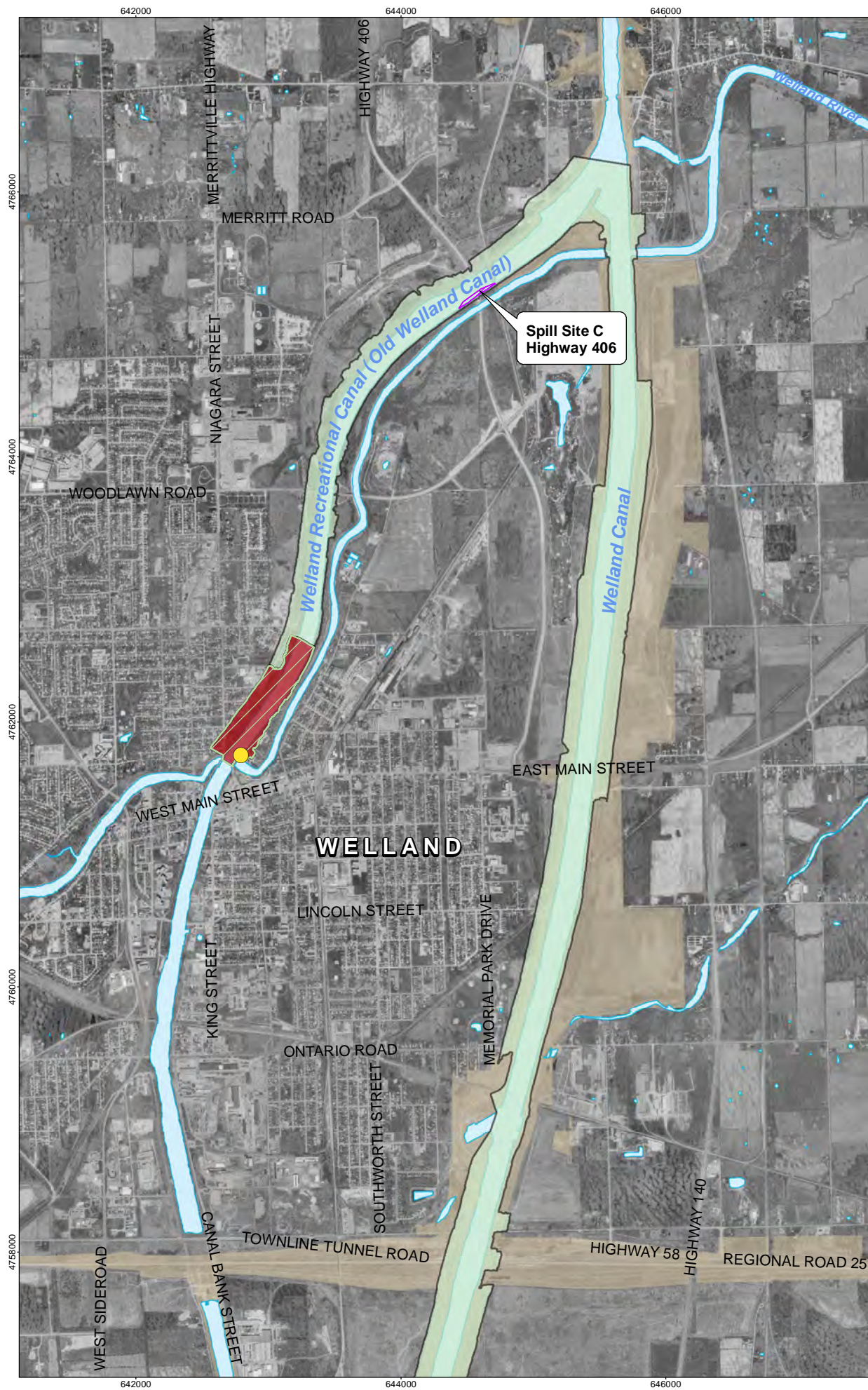
**Niagara Peninsula  
 Source Protection Area  
 Assessment Report**

Figure No. Revision No. Date  
**6.4 5 July 2013**

**Title**

**Welland WTP  
 IPZ Delineation  
 Source Data**





**Legend**

- Surface Water Intake
- IPZ-1
- IPZ-3
- Also Subject to IPZ-3 Significant Threat Policies
- Federal Lands
- Modeled Spill Location

**Notes:**

1. Coordinate System: NAD 1983 UTM Zone 17N
2. Imagery produced under license with the Niagara Peninsula Conservation Authority.

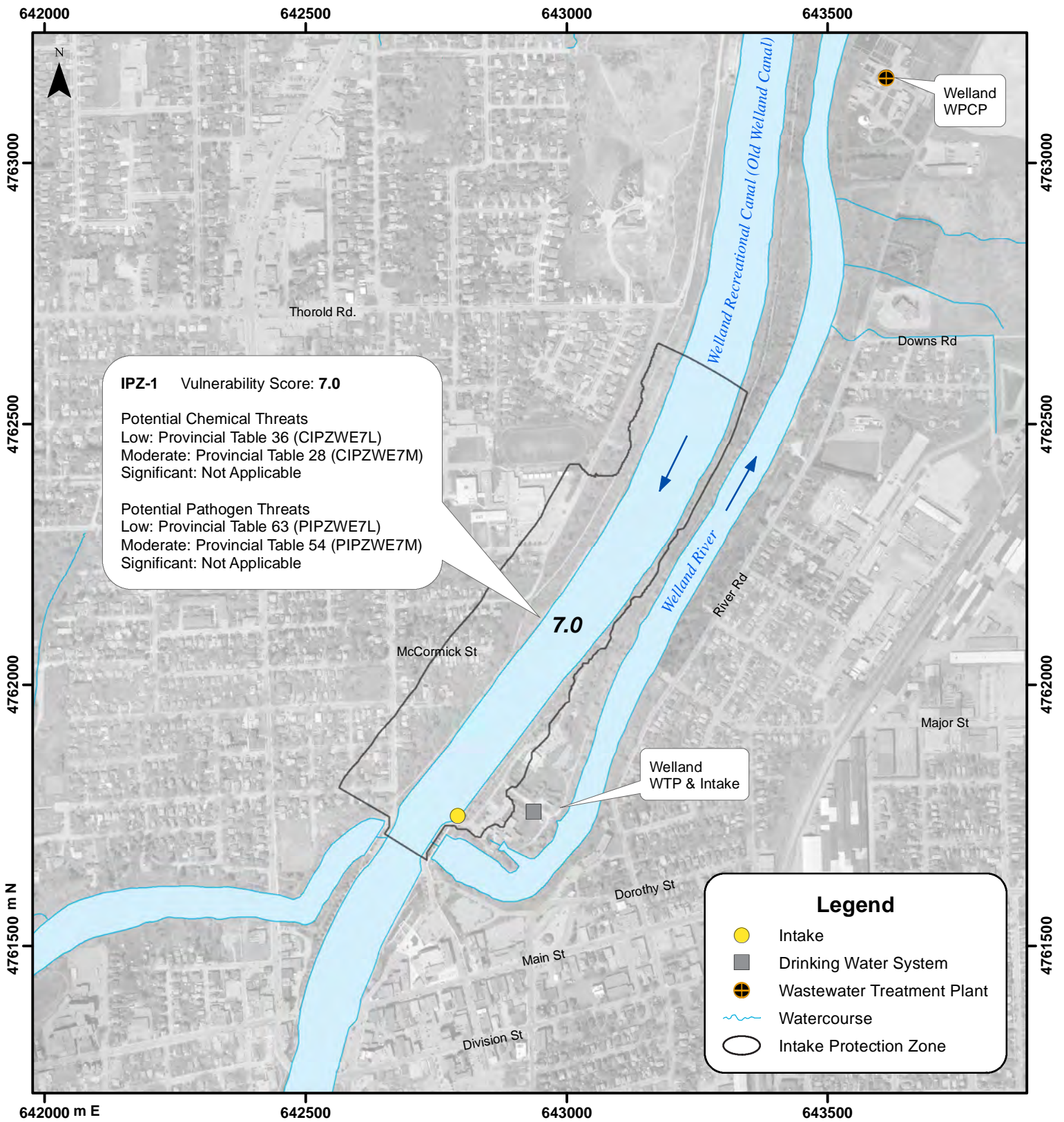
**Project**

**Niagara Peninsula  
Source Protection Area  
Assessment Report**

Figure No.	Revision No.	Date
6.5	1	June 2013

**Title**

**Welland WTP  
IPZ-3 Delineation**



**Notes:**

Blue arrows indicate direction of flow under normal conditions  
 Imagery courtesy of Niagara Region.  
 Hydrology courtesy of Niagara Peninsula Conservation Authority.  
 Copyright © 2013 Stantec Consulting Ltd.  
**Projection:** UTM Zone 17N, NAD 1983



Project

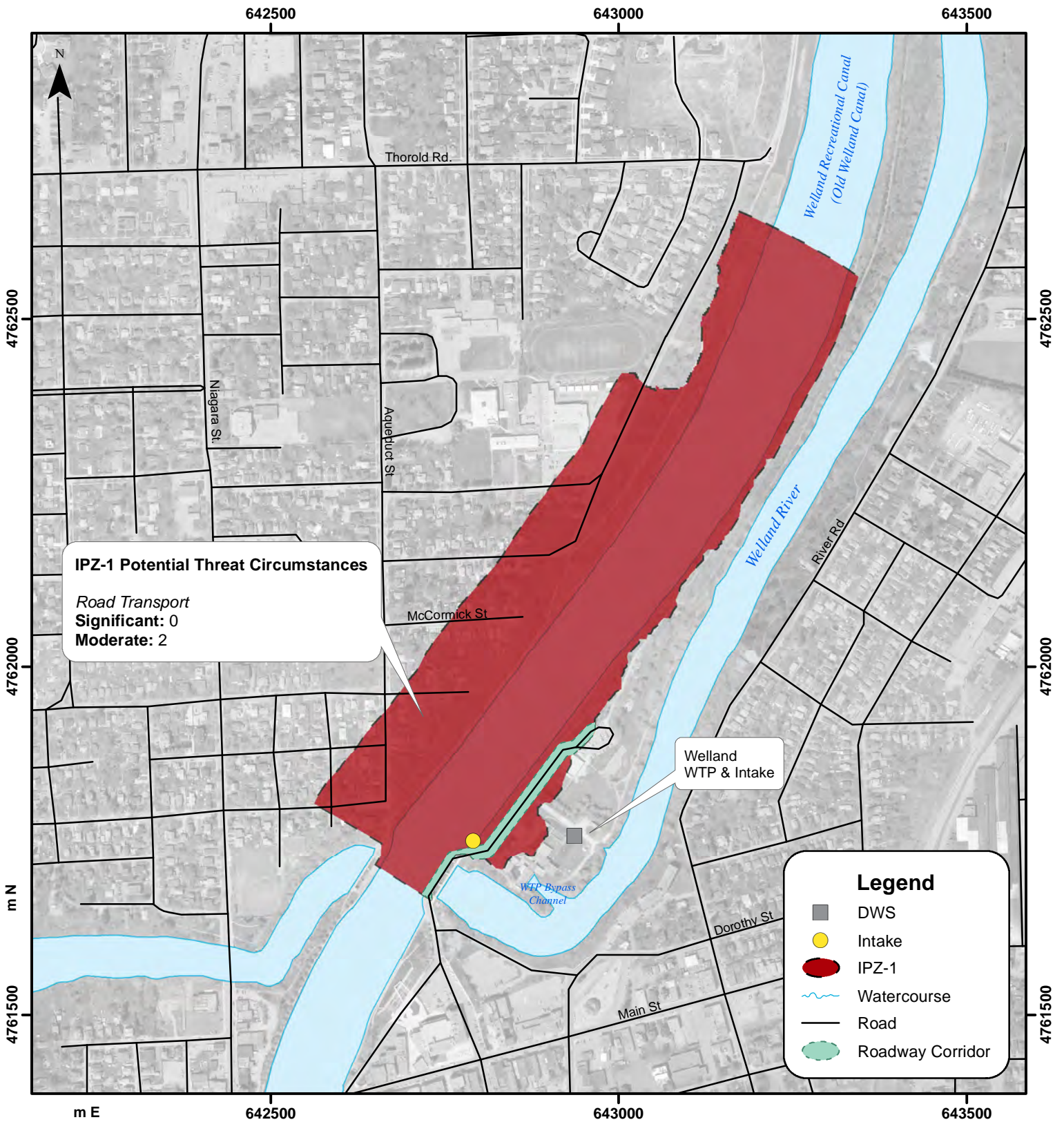
**Niagara Peninsula  
 Source Protection Area  
 Assessment Report**

Figure No. Revision No. Date  
**6.6 4 June 2013**

Title

**Threat Levels of  
 Potential Prescribed  
 Drinking Water Threats**





**Notes:**

Imagery courtesy of Niagara Region.  
 Hydrology courtesy of Niagara Peninsula Conservation Authority.  
 Copyright © 2013 by Stantec Consulting Ltd.  
**Projection:** UTM Zone 17N, NAD 1983



Project

**Niagara Peninsula  
 Source Protection Area  
 Assessment Report**

Figure No. Revision No. Date  
**6.7 0 October 9, 2013**

Title

**Welland WTP  
 Transportation  
 Threat Corridors**