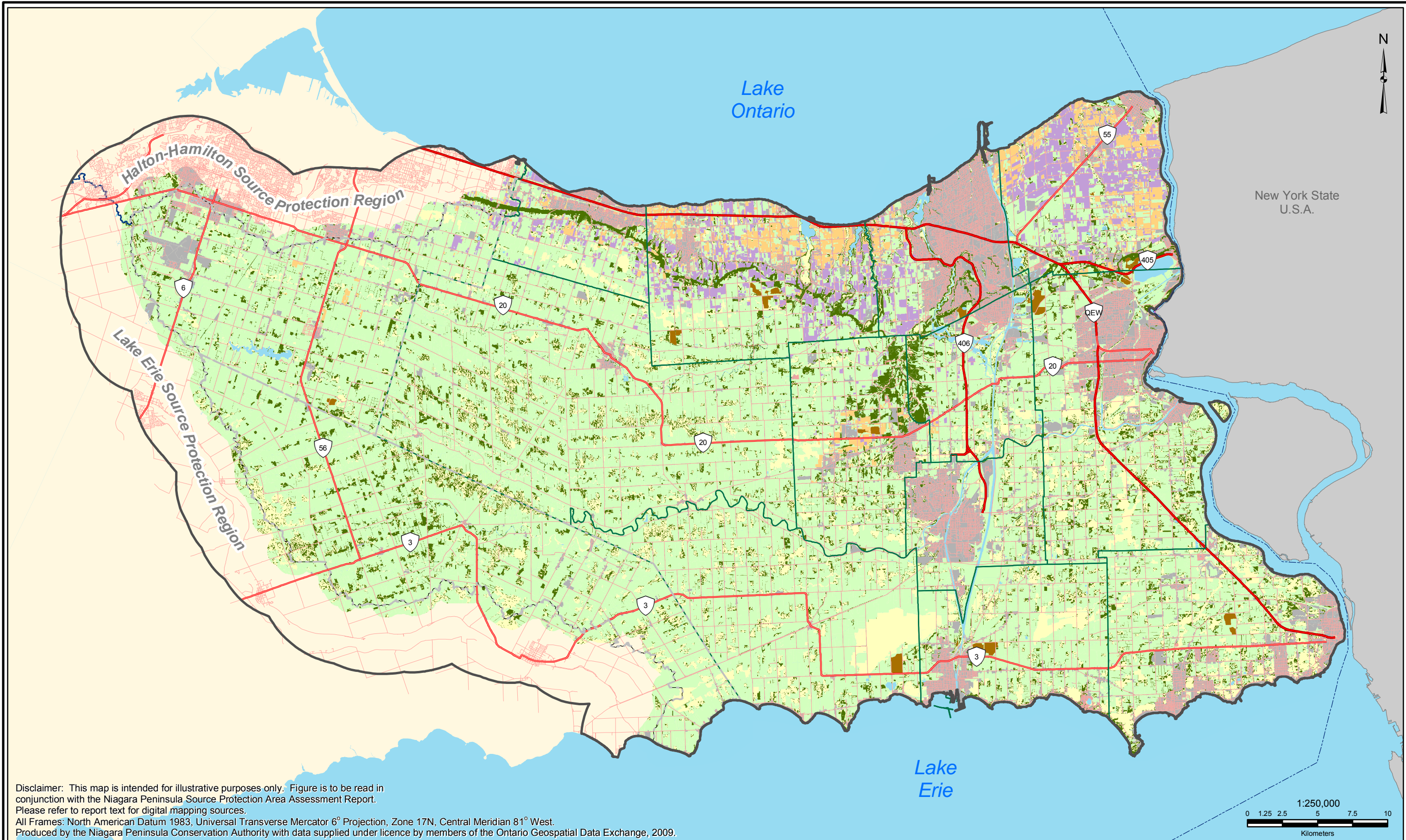


Legend --- International Boundary ~ Watercourse --- Major Highways ~ Ponds, Reservoirs, Lakes --- Highways ~ Extended Context Area --- Roads ~ Niagara Peninsula Source Water Protection Area		Lower Tier Municipality Upper Tier Municipality		Clay Silty Clay Loam Sand Sandy Loam Loam Loamy Sand Organic Soils Silty Clay Silty Loam Developed / Unclassified		DRINKING WATER SOURCE PROTECTION ACT FOR CLEAN WATER		NPSPA Assessment Report		
					Figure 2.4: Soils					
*Please note that soils mapping in this figure is represented by the combination of three different former county soil surveys.									Thursday, July 14, 2011	



Disclaimer: This map is intended for illustrative purposes only. Figure is to be read in conjunction with the Niagara Peninsula Source Protection Area Assessment Report. Please refer to report text for digital mapping sources.

All Frames: North American Datum 1983, Universal Transverse Mercator 6° Projection, Zone 17N, Central Meridian 81° West.

Produced by the Niagara Peninsula Conservation Authority with data supplied under licence by members of the Ontario Geospatial Data Exchange, 2009.

Legend

- International Boundary
- Major Highways
- Highways
- Roads
- Watercourse
- Ponds, Reservoirs, Lakes
- Extended Context Area
- Niagara Peninsula Source Water Protection Area
- Lower Tier Municipality
- Upper Tier Municipality

SOLRIS - SIL Land Cover

- Agriculture (58.98 %)
- Wetland (9.70 %)
- Built Up / Transportation (15.00 %)
- Forest (9.64 %)
- Extraction (0.34 %)
- Shoreline (0.01 %)
- Water (1.17 %)
- Orchards (2.10 %)
- Vineyards (3.06 %)



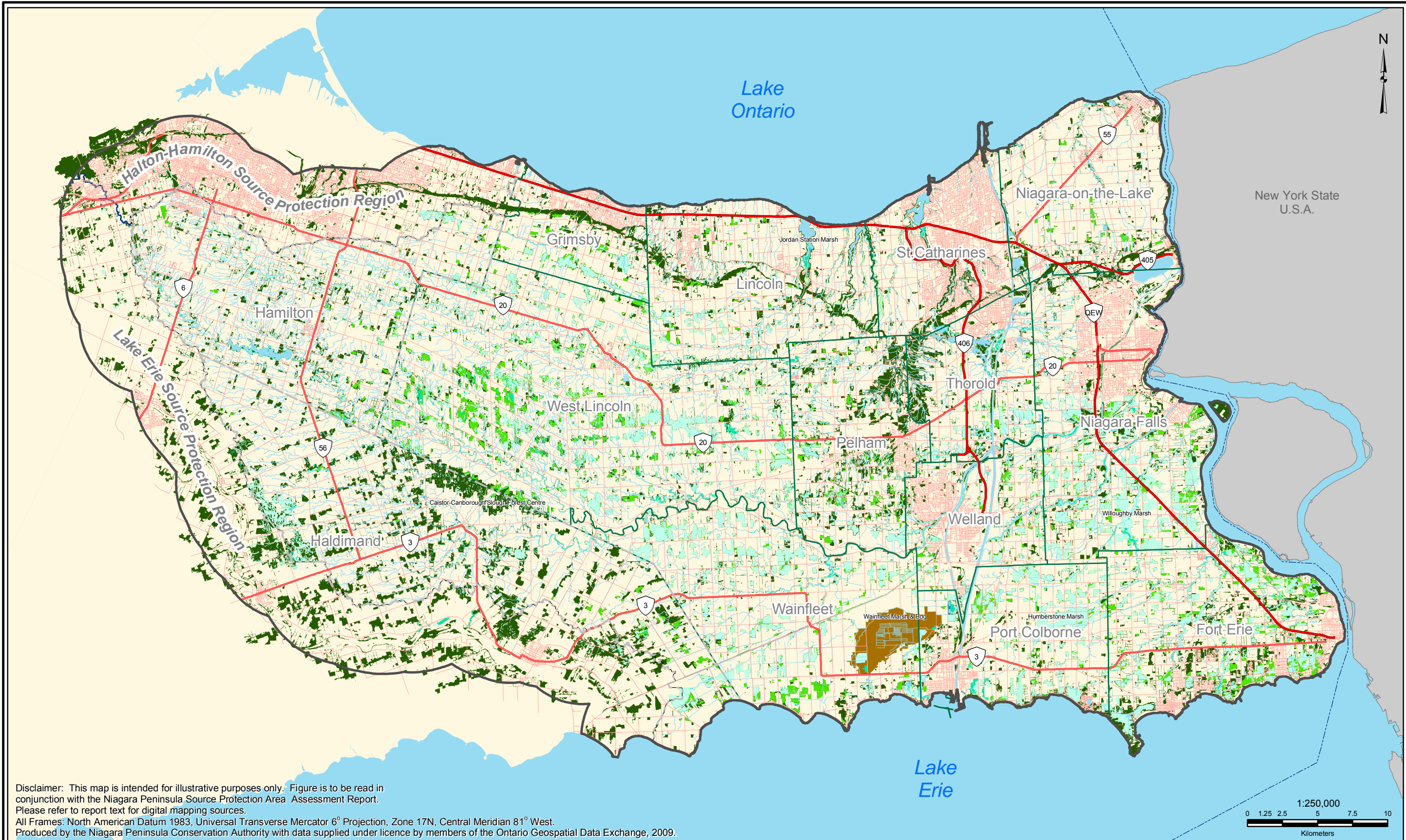
NPSPA Assessment Report

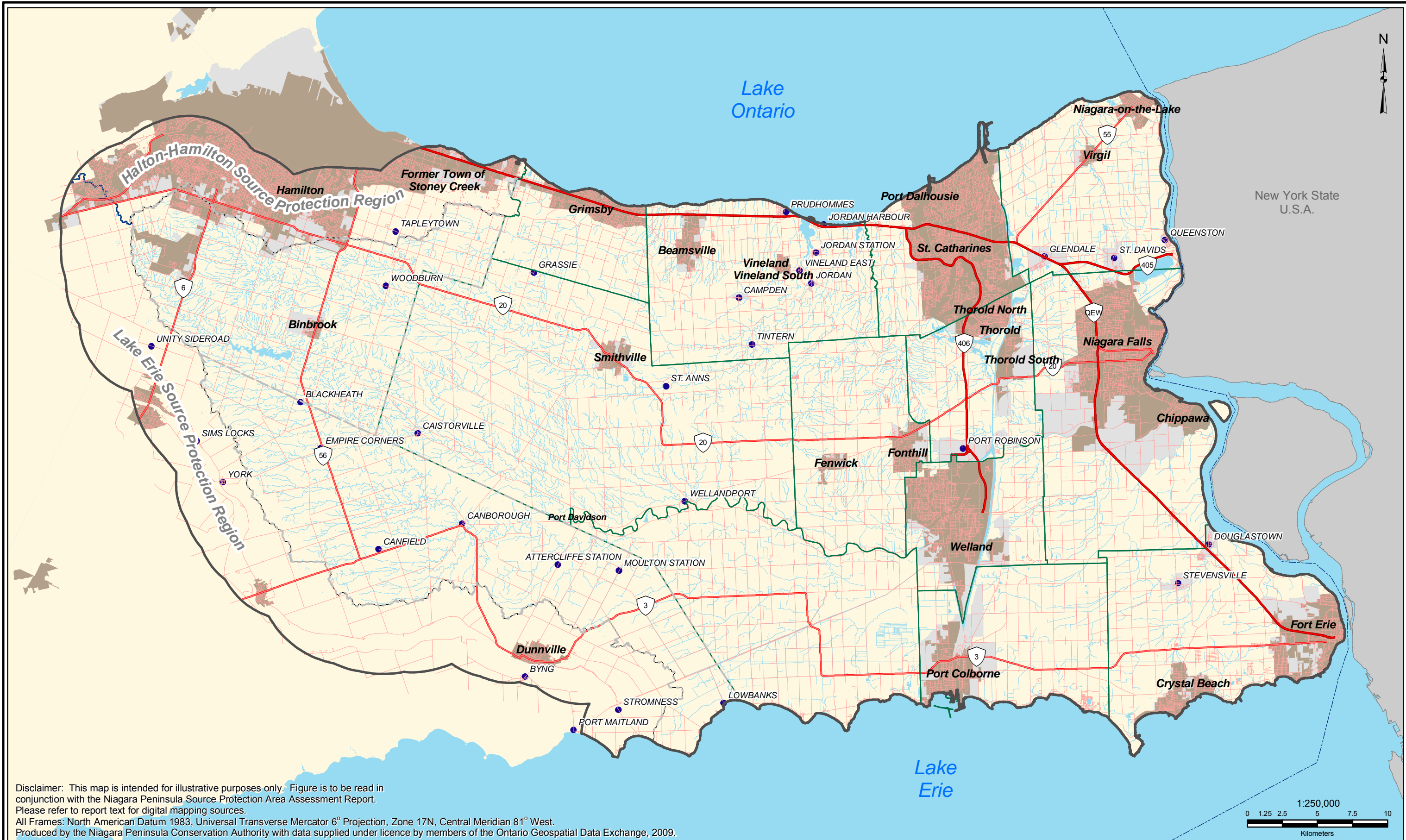
Figure 2.5: SOLRIS - SIL Land Cover

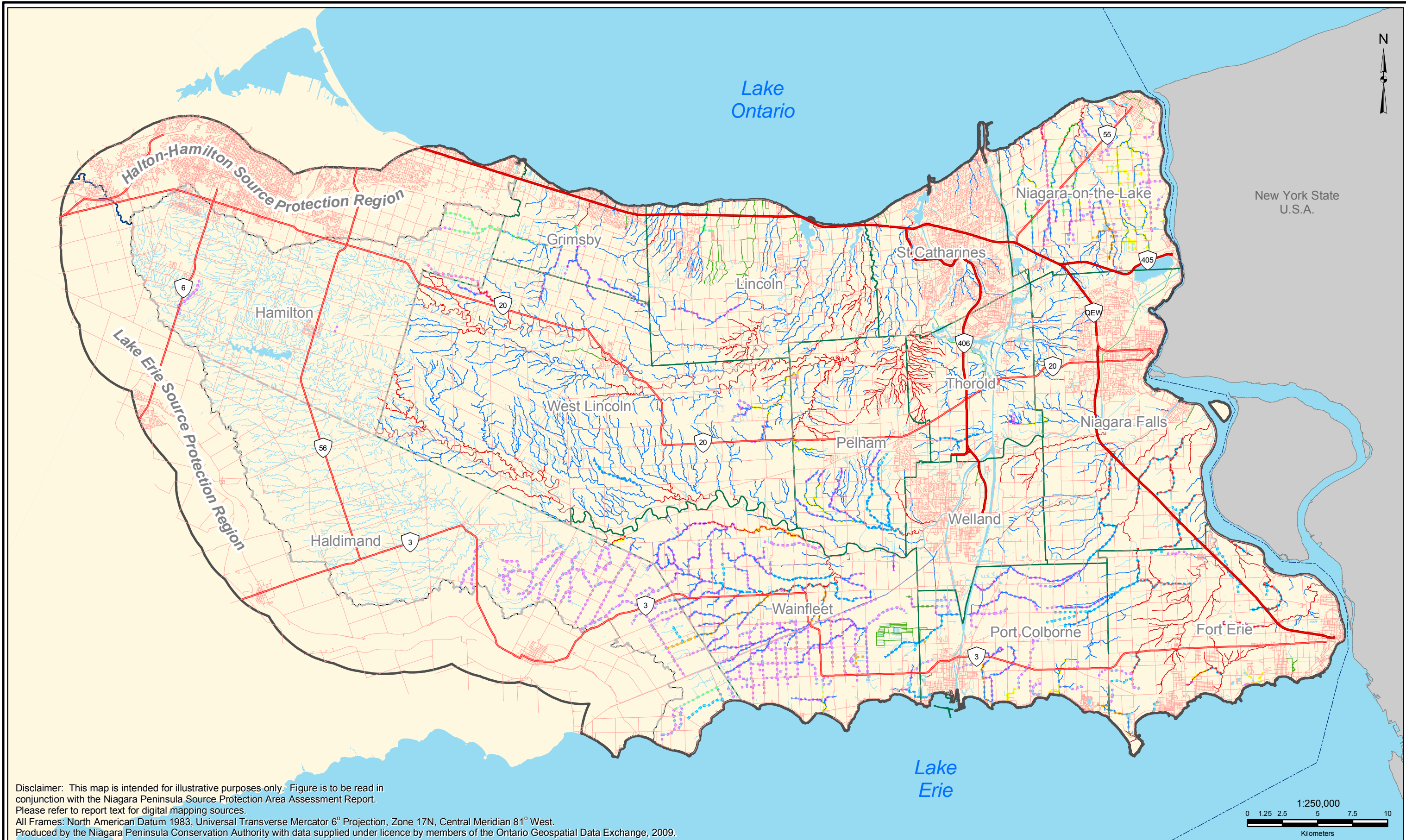


Thursday, July 14, 2011













Disclaimer: This map is intended for illustrative purposes only. Figure is to be read in conjunction with the Niagara Peninsula Source Protection Area Assessment Report. Please refer to report text for digital mapping sources.
All Frames: North American Datum 1983, Universal Transverse Mercator 6° Projection, Zone 17N, Central Meridian 81° West.
Produced by the Niagara Peninsula Conservation Authority with data supplied under licence by members of the Ontario Geospatial Data Exchange, 2009.

Legend <ul style="list-style-type: none">--- International BoundaryMajor HighwaysHighwaysRoadsWatercoursePonds, Reservoirs, LakesNiagara Peninsula Source Water Protection AreaLower Tier MunicipalityUpper Tier Municipality	MNR Classification <ul style="list-style-type: none">Type 1: CriticalType 2: ImportantType 3: Marginal	DFO Municipal Drain Class Authorization <ul style="list-style-type: none">Class A : Permanent, Coldwater or Temperature UnknownClass B: Permanent, Warmwater, Top Predators, < 10 yrs since cleanoutClass C: WarmwaterClass D: Permanent, Coldwater, Salmonids Present or UnknownClass E: Permanent, Warmwater, Top Predators, > 10 yrs since cleanoutClass F: Intermittent or Ephemeral		 DRINKING WATER SOURCE PROTECTION ACT FOR CLEAN WATER	NPSPA Assessment Report
Figure 2.8: Fish Habitat Areas					
					Thursday, July 14, 2011
					



Disclaimer: This map is intended for illustrative purposes only. Figure is to be read in conjunction with the Niagara Peninsula Source Protection Area Assessment Report. Please refer to report text for digital mapping sources.

All Frames: North American Datum 1983, Universal Transverse Mercator 6° Projection, Zone 17N, Central Meridian 81° West.

Produced by the Niagara Peninsula Conservation Authority with data supplied under licence by members of the Ontario Geospatial Data Exchange, 2009.

Legend		NPCA Sampling Site and Rating*	
--- International Boundary	● Ponds, Reservoirs, Lakes	● Grey Zone	■ Sampled Subwatersheds
— Major Highways	■ Extended Context Area	● Impaired	
— Highways	■ Niagara Peninsula Source Water Protection Area	● Insufficient Data	
— Roads	■ Lower Tier Municipality	● Unimpaired	
— Watercourse	■ Upper Tier Municipality		

* Ratings are based on Biomap assessment which was calculated using data collected from 2001 - 2009

NPSA Assessment Report

Figure 2.9: Biomap Surface Water Quality

Thursday, July 14, 2011



Disclaimer: This map is intended for illustrative purposes only. Figure is to be read in conjunction with the Niagara Peninsula Source Protection Area Assessment Report. Please refer to report text for digital mapping sources.

All Frames: North American Datum 1983, Universal Transverse Mercator 6° Projection, Zone 17N, Central Meridian 81° West.

Produced by the Niagara Peninsula Conservation Authority with data supplied under licence by members of the Ontario Geospatial Data Exchange, 2009.

Legend			
--- International Boundary	● Ponds, Reservoirs, Lakes	NPCA Sampling Site and Rating*	
— Major Highways	■ Extended Context Area	● Good	■ Sampled Subwatersheds
— Highways	□ Niagara Peninsula Source Water Protection Area	○ Fair	
— Roads	□ Lower Tier Municipality	○ Marginal	
— Watercourse	□ Upper Tier Municipality	● Poor	
		● Insufficient Data	

* Ratings are based on Biomap assessment which was calculated using data collected from 2001 - 2009

NPSA Assessment Report

Figure 2.10: General Surface Water Quality

Thursday, July 14, 2011