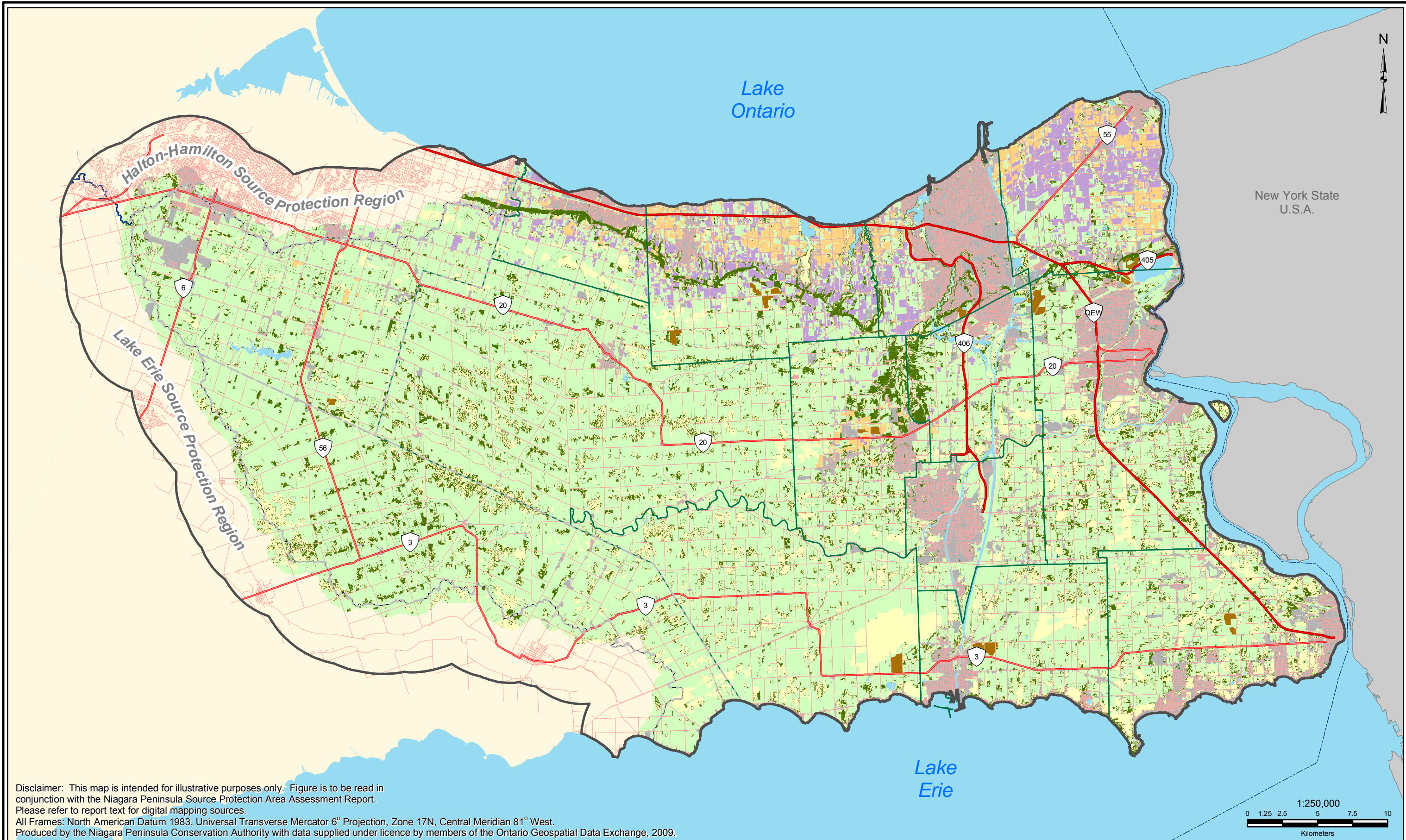


Disclaimer: This map is intended for illustrative purposes only. Figure is to be read in conjunction with the Niagara Peninsula Source Protection Area Assessment Report. Please refer to report text for digital mapping sources.

All Frames: North American Datum 1983, Universal Transverse Mercator 6° Projection, Zone 17N, Central Meridian 81° West.

Produced by the Niagara Peninsula Conservation Authority with data supplied under licence by members of the Ontario Geospatial Data Exchange, 2009.

Legend --- International Boundary ~ Watercourse --- Major Highways ~ Ponds, Reservoirs, Lakes --- Highways ~ Extended Context Area --- Roads ~ Niagara Peninsula Source Water Protection Area		Lower Tier Municipality Upper Tier Municipality	Clay Silty Clay Loam Sand Sandy Loam Loam Loamy Sand Organic Soils Silty Clay Silty Loam Developed / Unclassified	DRINKING WATER SOURCE PROTECTION ACT FOR CLEAN WATER	NPSA Assessment Report <i>Figure 2.4: Soils</i>
*Please note that soils mapping in this figure is represented by the combination of three different former county soil surveys.					Thursday, July 14, 2011



Disclaimer: This map is intended for illustrative purposes only. Figure is to be read in conjunction with the Niagara Peninsula Source Protection Area Assessment Report. Please refer to report text for digital mapping sources.

All Frames: North American Datum 1983, Universal Transverse Mercator 6° Projection, Zone 17N, Central Meridian 81° West.

Produced by the Niagara Peninsula Conservation Authority with data supplied under licence by members of the Ontario Geospatial Data Exchange, 2009.

Legend

- International Boundary
- Major Highways
- Highways
- Roads
- Watercourse
- Ponds, Reservoirs, Lakes
- Extended Context Area
- Niagara Peninsula Source Water Protection Area
- Lower Tier Municipality
- Upper Tier Municipality

SOLRIS - SIL Land Cover

- Agriculture (58.98 %)
- Wetland (9.70 %)
- Built Up / Transportation (15.00 %)
- Forest (9.64 %)
- Extraction (0.34 %)
- Shoreline (0.01 %)
- Water (1.17 %)
- Orchards (2.10 %)
- Vineyards (3.06 %)



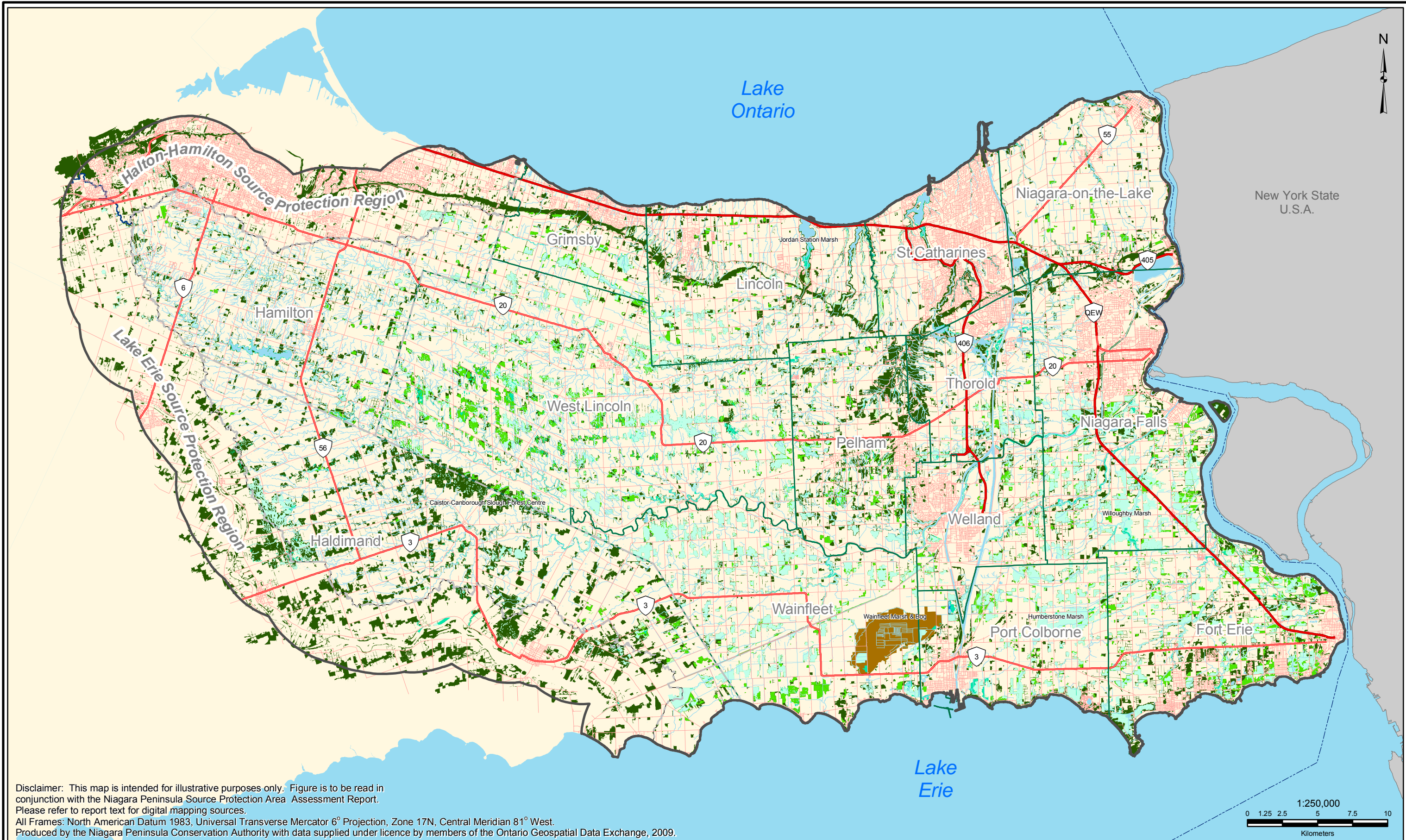
NPSPA Assessment Report

Figure 2.5: SOLRIS - SIL Land Cover

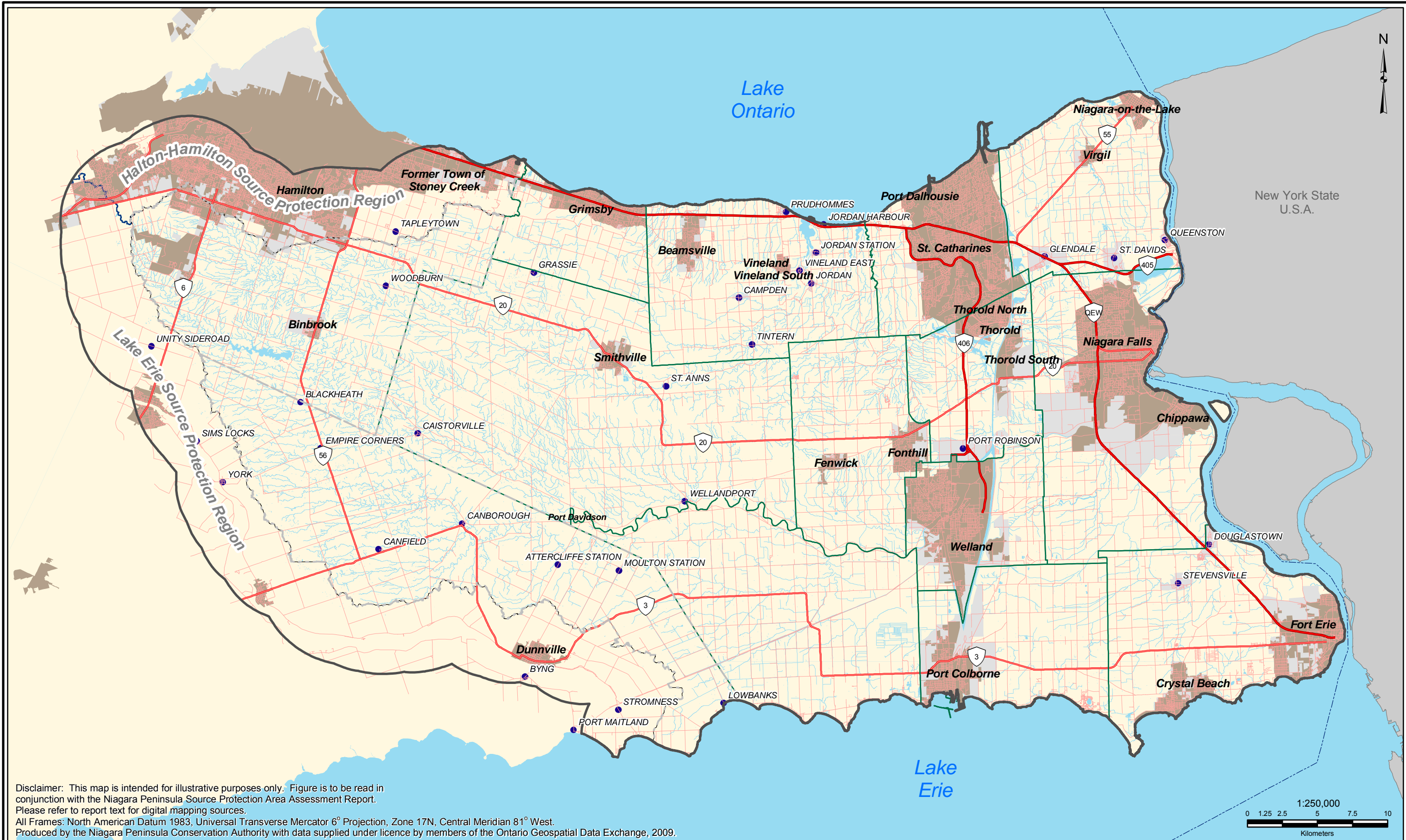


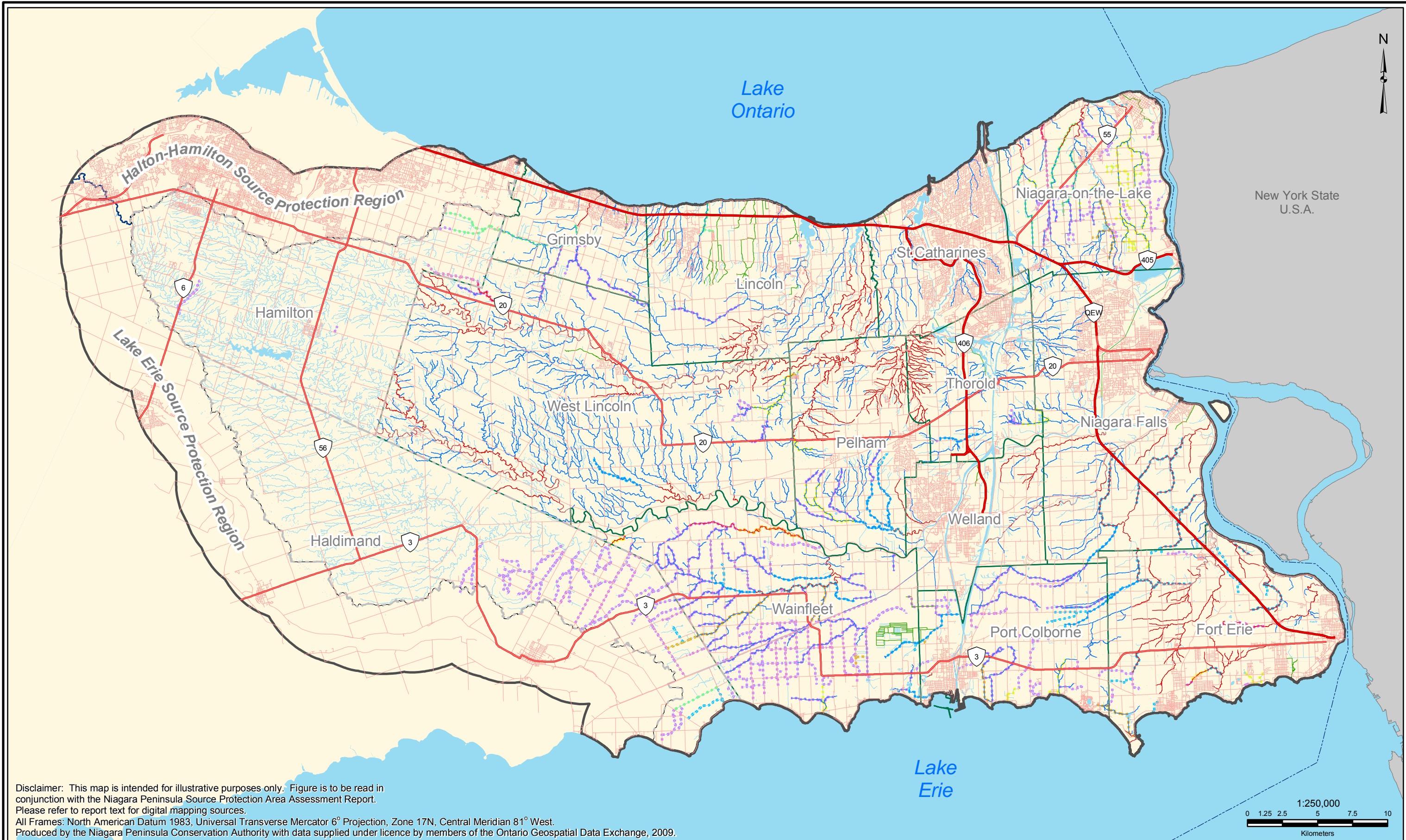
Thursday, July 14, 2011





Legend --- International Boundary ~ Watercourse --- Major Highways ~ Ponds, Reservoirs, Lakes --- Highways ~ Extended Context Area --- Roads ~ Niagara Peninsula Source Water Protection Area		Lower Tier Municipality Upper Tier Municipality		Natural Communities Bog Fen Open Water Marsh Swamp Wet Forest Moist Forest Upland Forest					NPSPA Assessment Report	
							Figure 2.6 Natural Heritage Systems			
									Thursday, July 14, 2011	





Legend		DFO Municipal Drain Class Authorization	
--- International Boundary	Watercourse	Class A : Permanent, Coldwater or Temperature Unknown	
Major Highways	Ponds, Reservoirs, Lakes	Class B : Permanent, Warmwater, Top Predators, < 10 yrs since cleanout	
Highways	Niagara Peninsula Source Water Protection Area	Class C : Warmwater	
Roads	Lower Tier Municipality	Class D : Permanent, Coldwater, Salmonids Present or Unknown	
	Upper Tier Municipality	Class E : Permanent, Warmwater, Top Predators, > 10 yrs since cleanout	
		Class F : Intermittent or Ephemeral	
MNR Classification			
Type 1: Critical			
Type 2: Important			
Type 3: Marginal			

Drinking Water Source Protection

ACT FOR CLEAN WATER

NPSA Assessment Report

Figure 2.8: Fish Habitat Areas

Thursdays, July 14, 2011