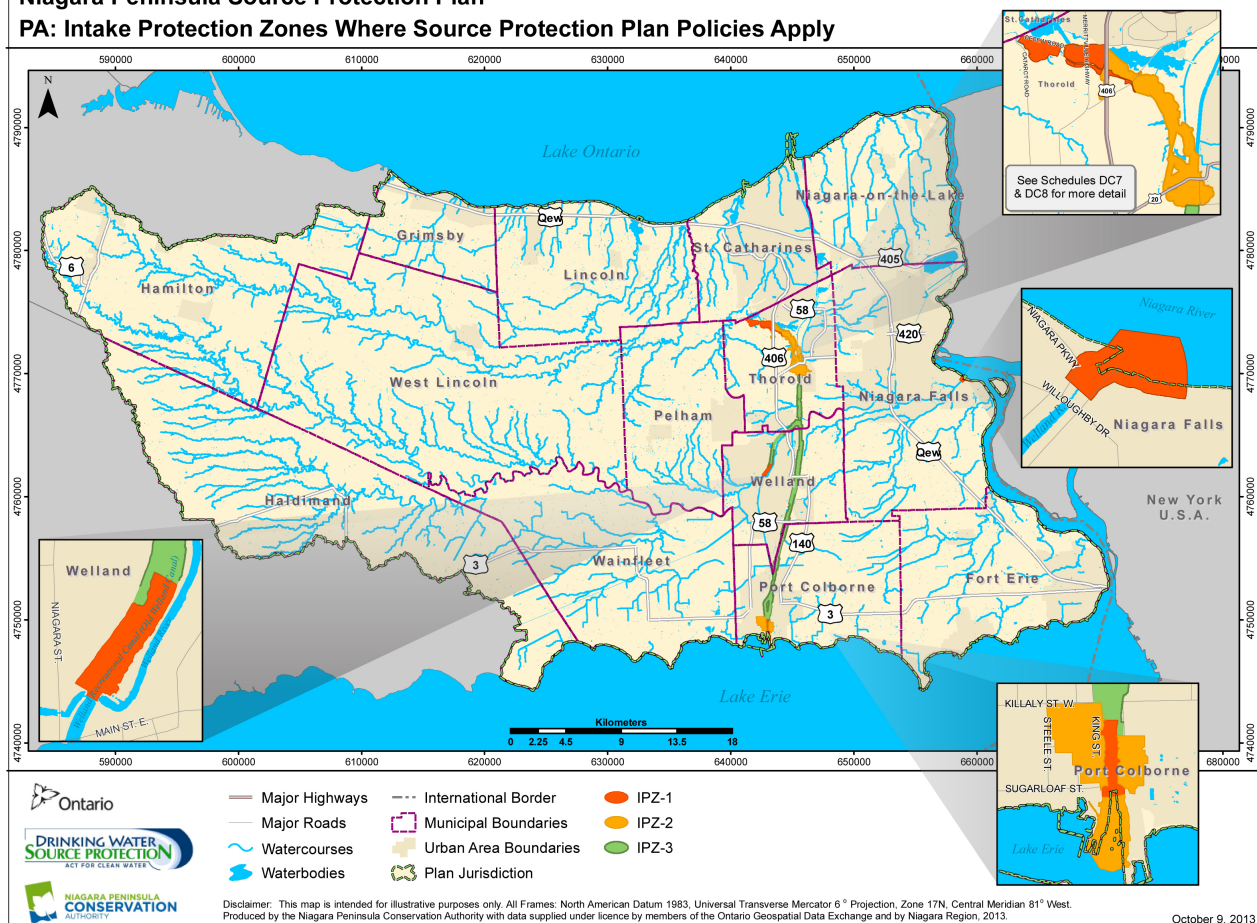


Source Protection Annual Progress Report |

I. Introduction

Niagara Peninsula Source Protection Plan
PA: Intake Protection Zones Where Source Protection Plan Policies Apply



II. A message from your local Source Protection Committee

Our progress score on achieving source protection plan objectives this reporting period:

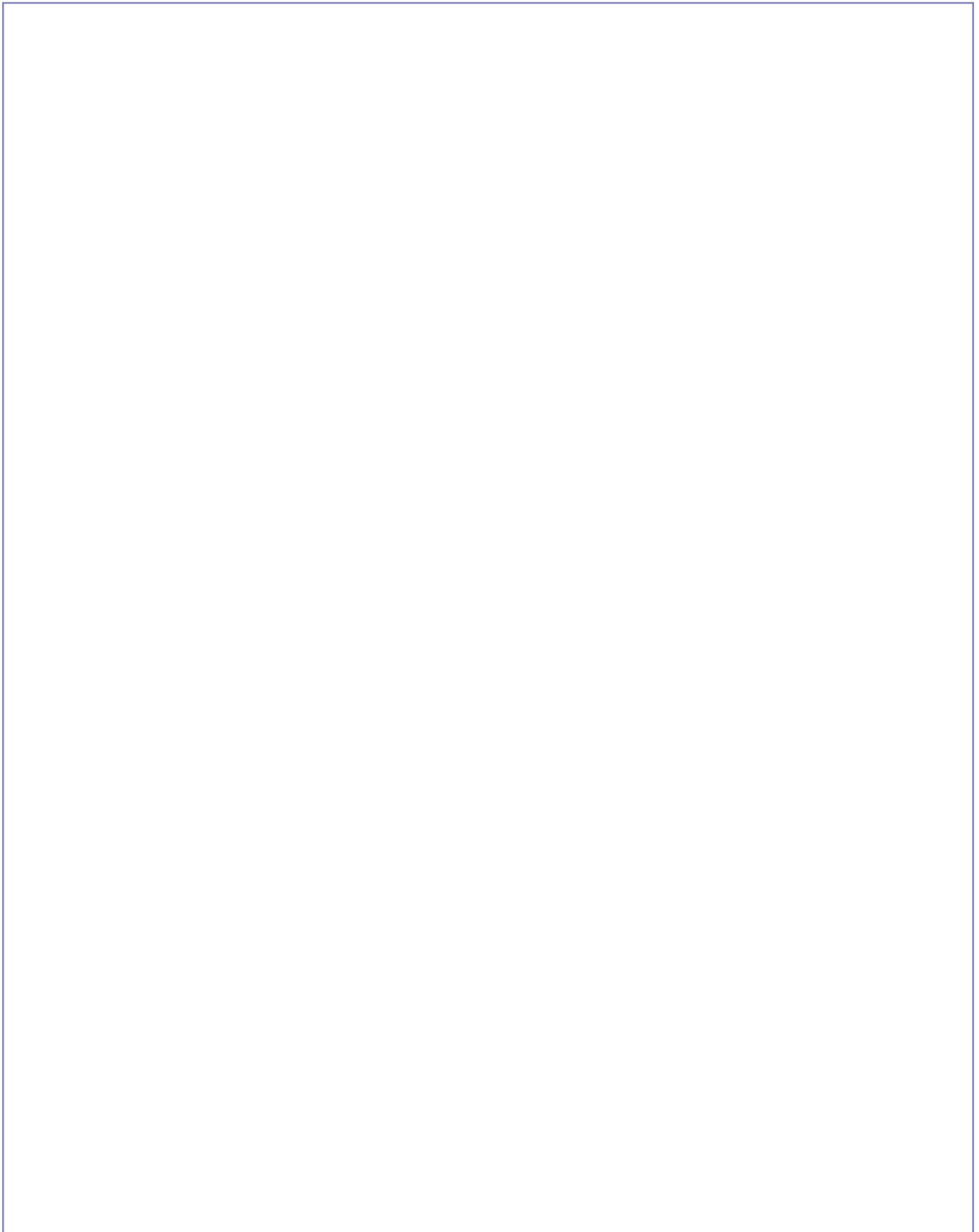
P : Progressing Well/On Target – The majority of the source protection plan policies have been implemented and/or are progressing in accordance with the timelines specified in the source protection plan.

S : Satisfactory – Some of the source protection plan policies have been implemented and/or are progressing in accordance with the timelines specified in the source protection plan.

L : Limited progress – A few of source protection plan policies have been implemented and/or are progressing in accordance with the timelines specified in the source protection plan.

III. Our Watershed

To learn more, please read our assessment report(s) and source protection plan(s).



IV. At a Glance: Progress on Source Protection Plan Implementation

1. Source Protection Plan Policies

2. Municipal Progress: Addressing Risks on the Ground

3. Septic Inspections

4. Risk Management Plans

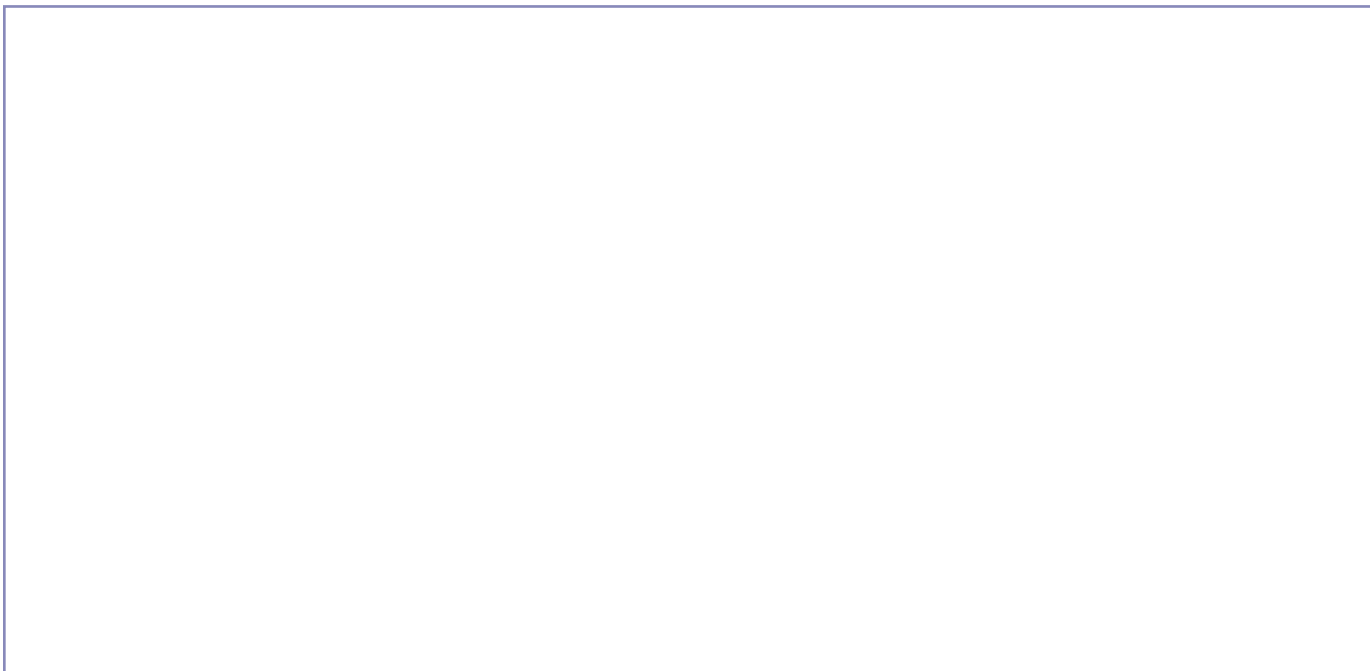
5. Provincial Progress: Addressing Risks on the Ground

6. Source Protection Awareness and Change in Behaviour

7. Source Protection Plan Policies: Summary of Delays

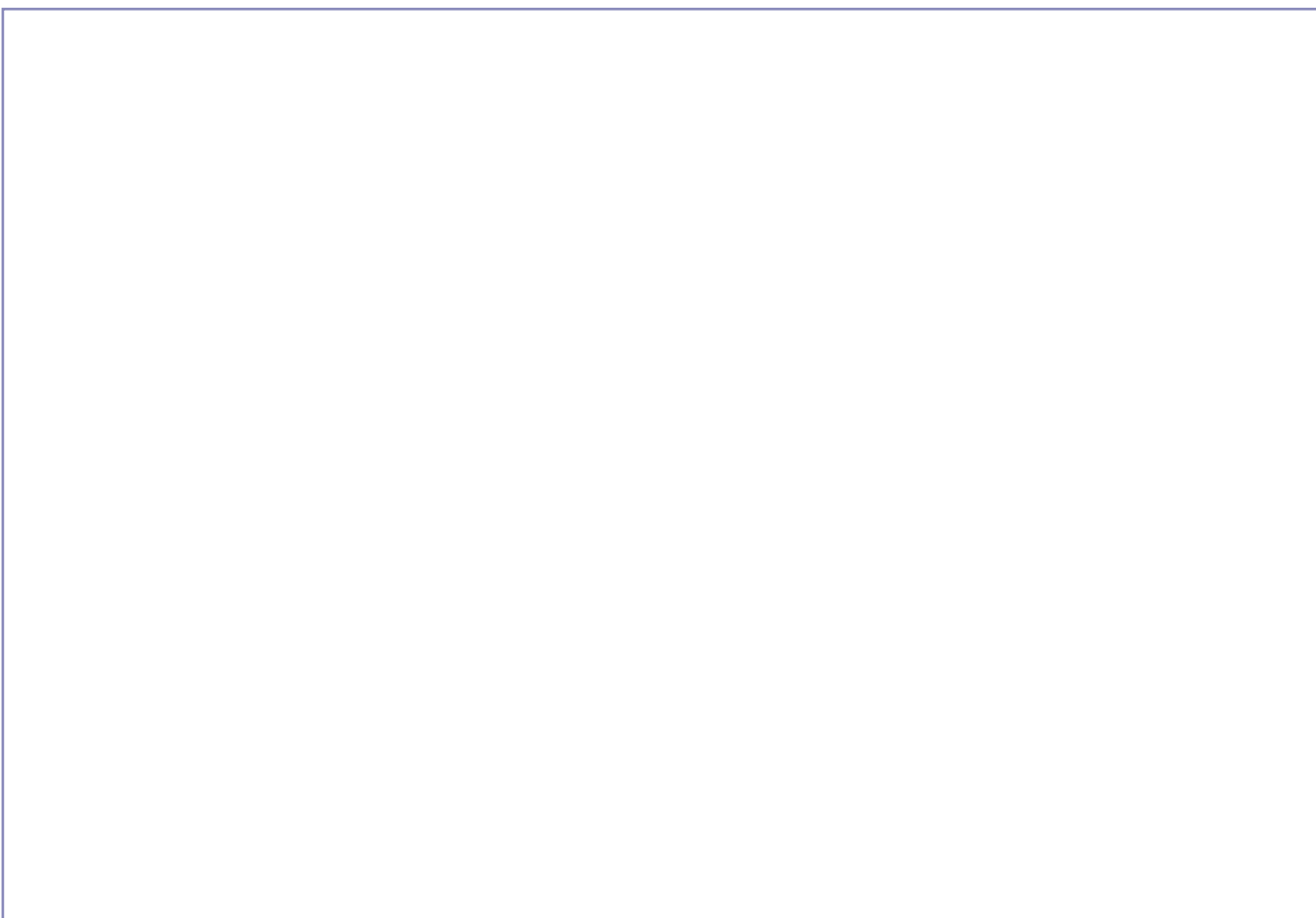
8. Source Water Quality: Monitoring and Actions

9. Science-based Assessment Reports: Work Plans



10. More from the Watershed

To learn more about our source protection region/area, visit our [Homepage](#).





Port Colborne Intake (Upstream)



**Niagara Falls Intake
Location on Niagara River**



Welland Intake



Decew Intake Building