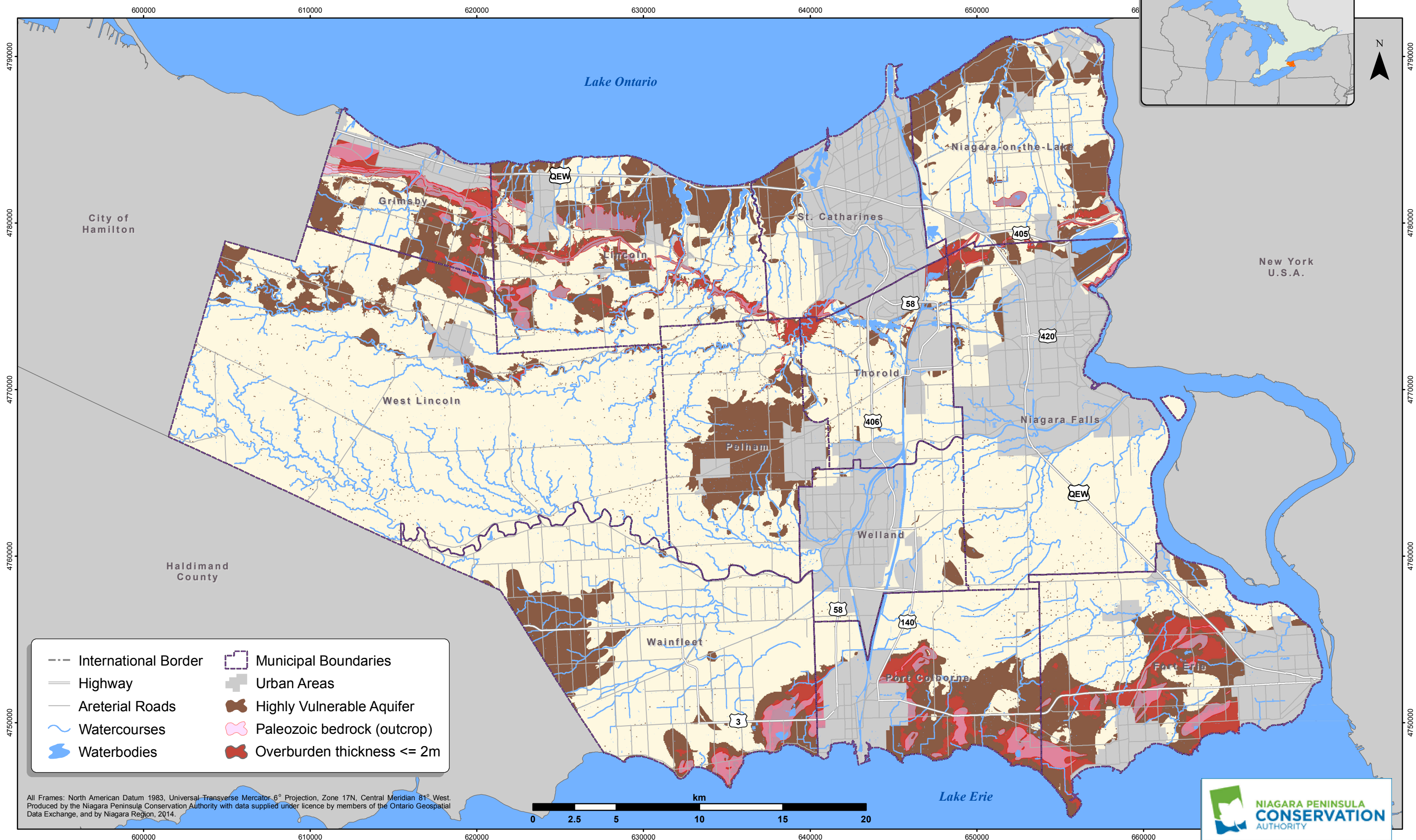


Hydrologically Sensitive Areas (a Subset of Highly Vulnerable Aquifers)



All Frames: North American Datum 1983, Universal Transverse Mercator 6° Projection, Zone 17N, Central Meridian 81° West. Produced by the Niagara Peninsula Conservation Authority with data supplied under licence by members of the Ontario Geospatial Data Exchange, and by Niagara Region, 2014.

